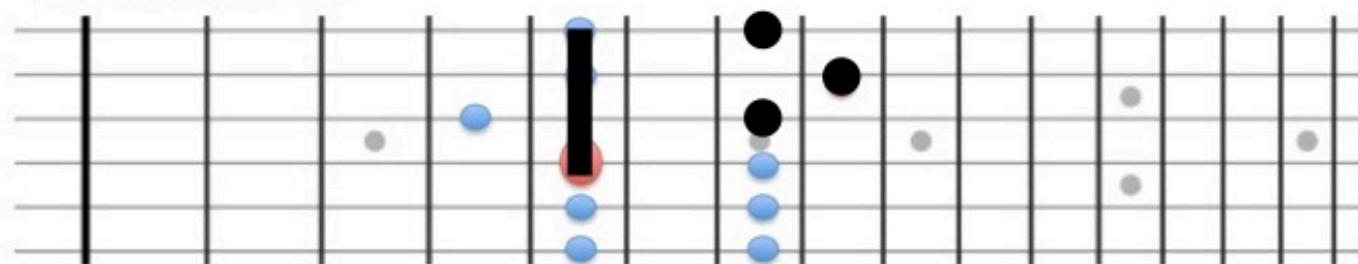
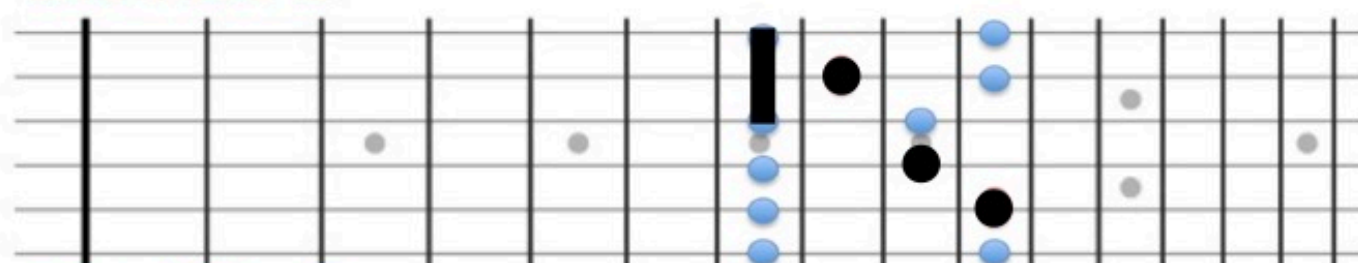


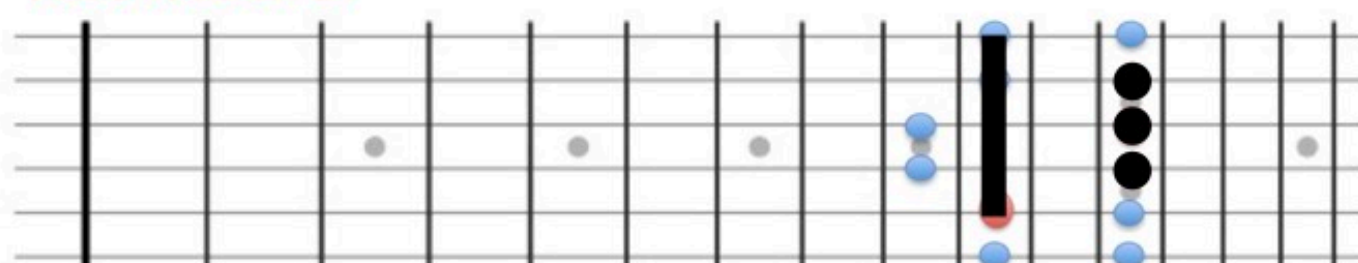
Modelo E



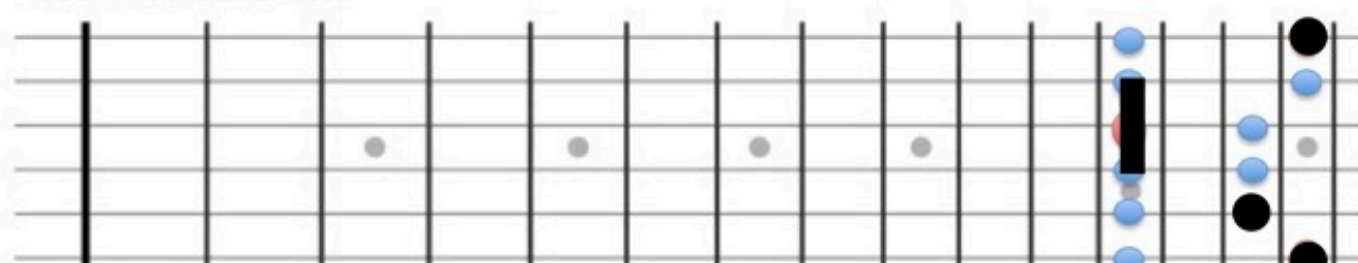
Modelo D



Modelo C

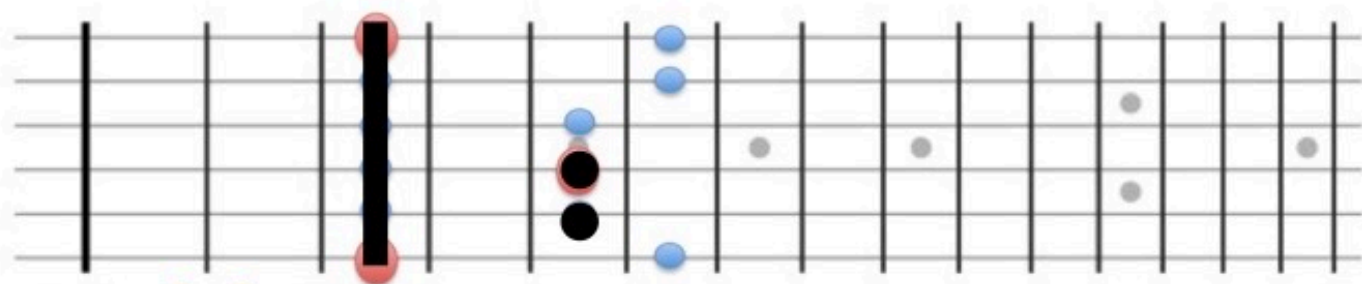


Modelo A

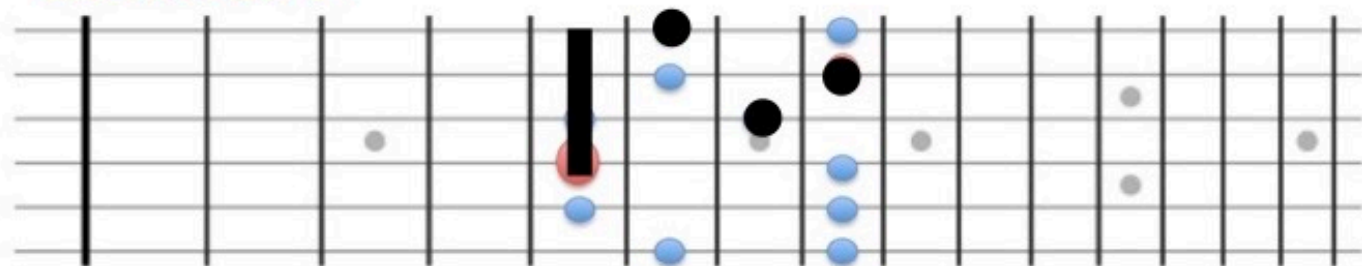


Modelo G

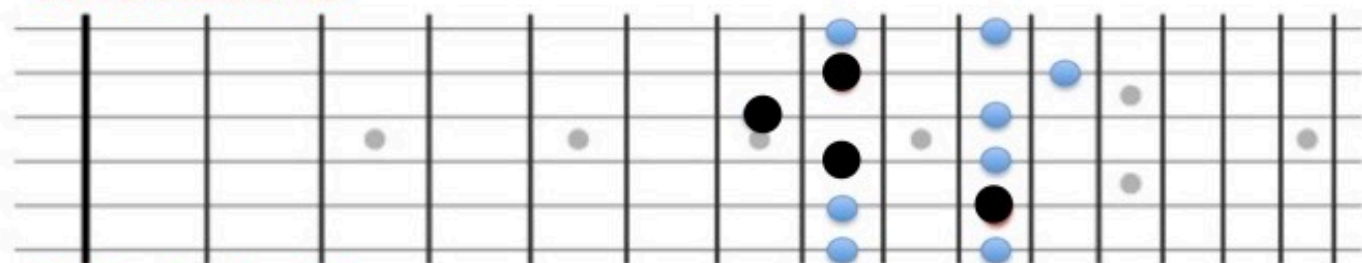
Pentatónica Mayor



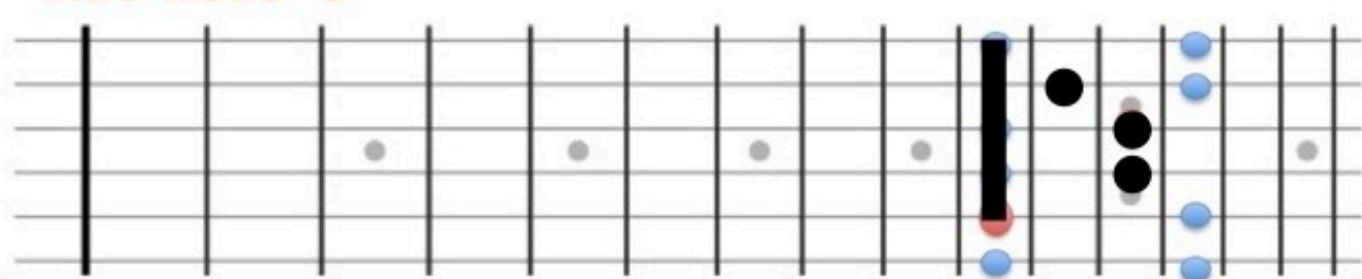
Modelo E



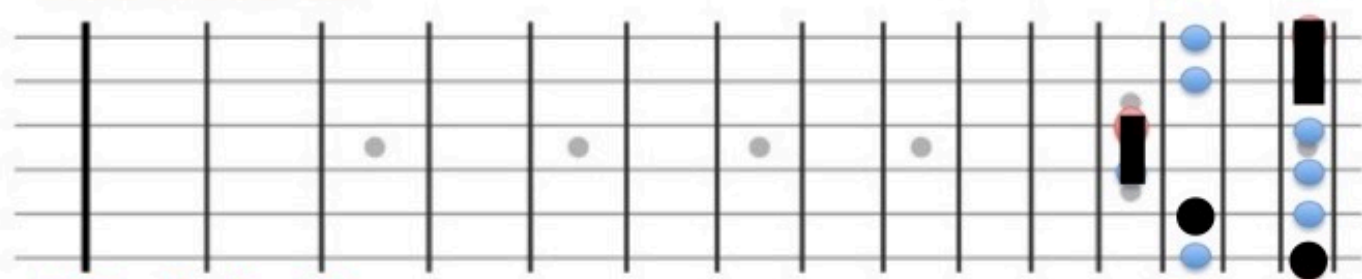
Modelo D



Modelo C



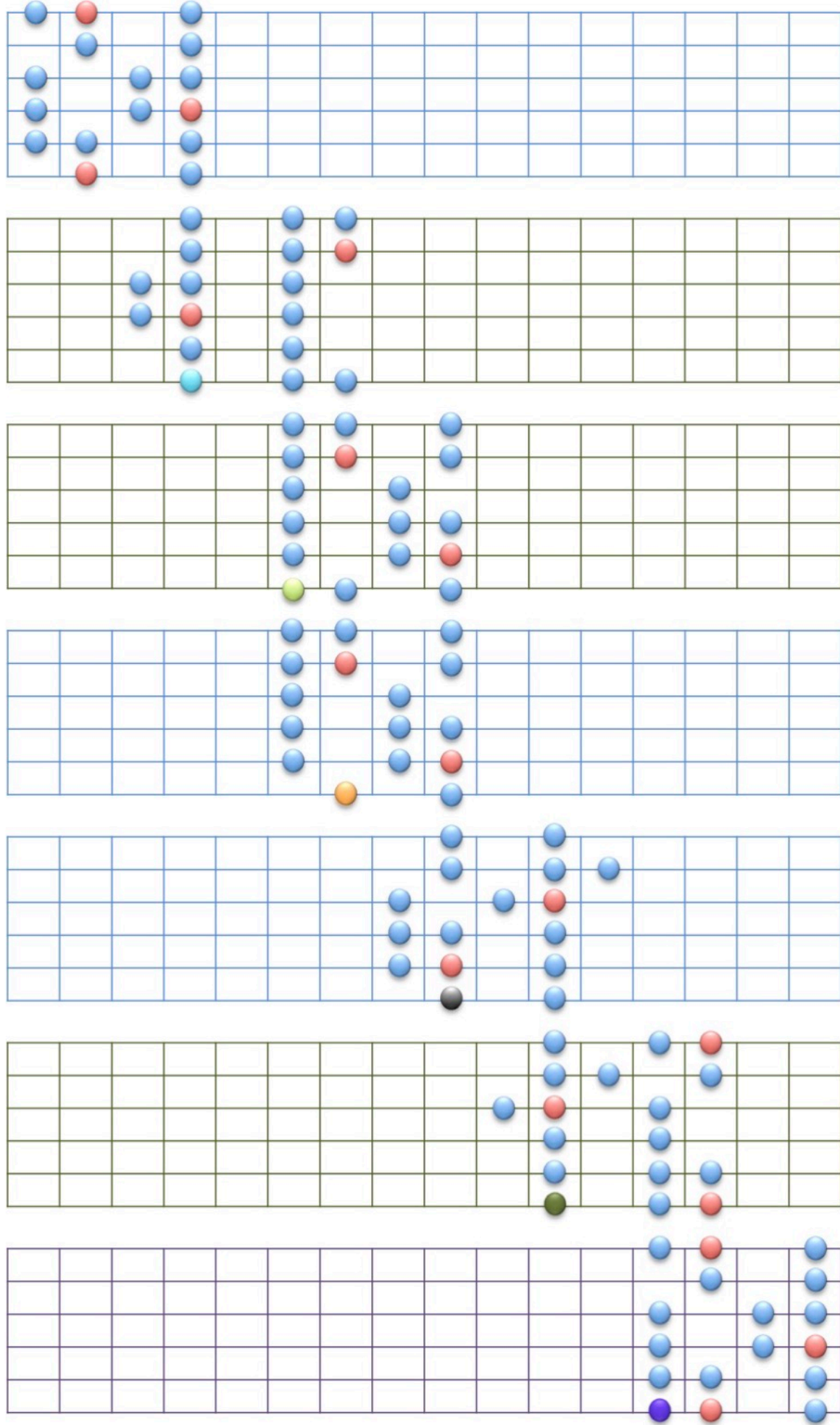
Modelo A



Modelo G

Pentatónica menor

Escala mayor diatónica/ Modos griegos



Ionian

Dorian

Phrygian

Lydian

Mixolydian

Eolian

Locrian

Relación del nº digitación de las figuras pentatónicas con las diatónicas:

PENTATÓNICA MAYOR	DIATÓNICA
1	1
2	2
3	3
(3)	(4)
4	5
5	6
(1)	(7)

PENTATÓNICA MENOR	DIATÓNICA
1	6
(2)	(7)
2	1
3	2
4	3
(4)	(4)
5	5